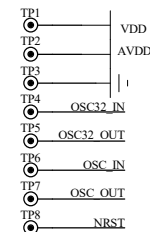
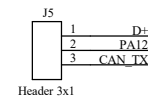
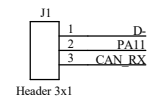
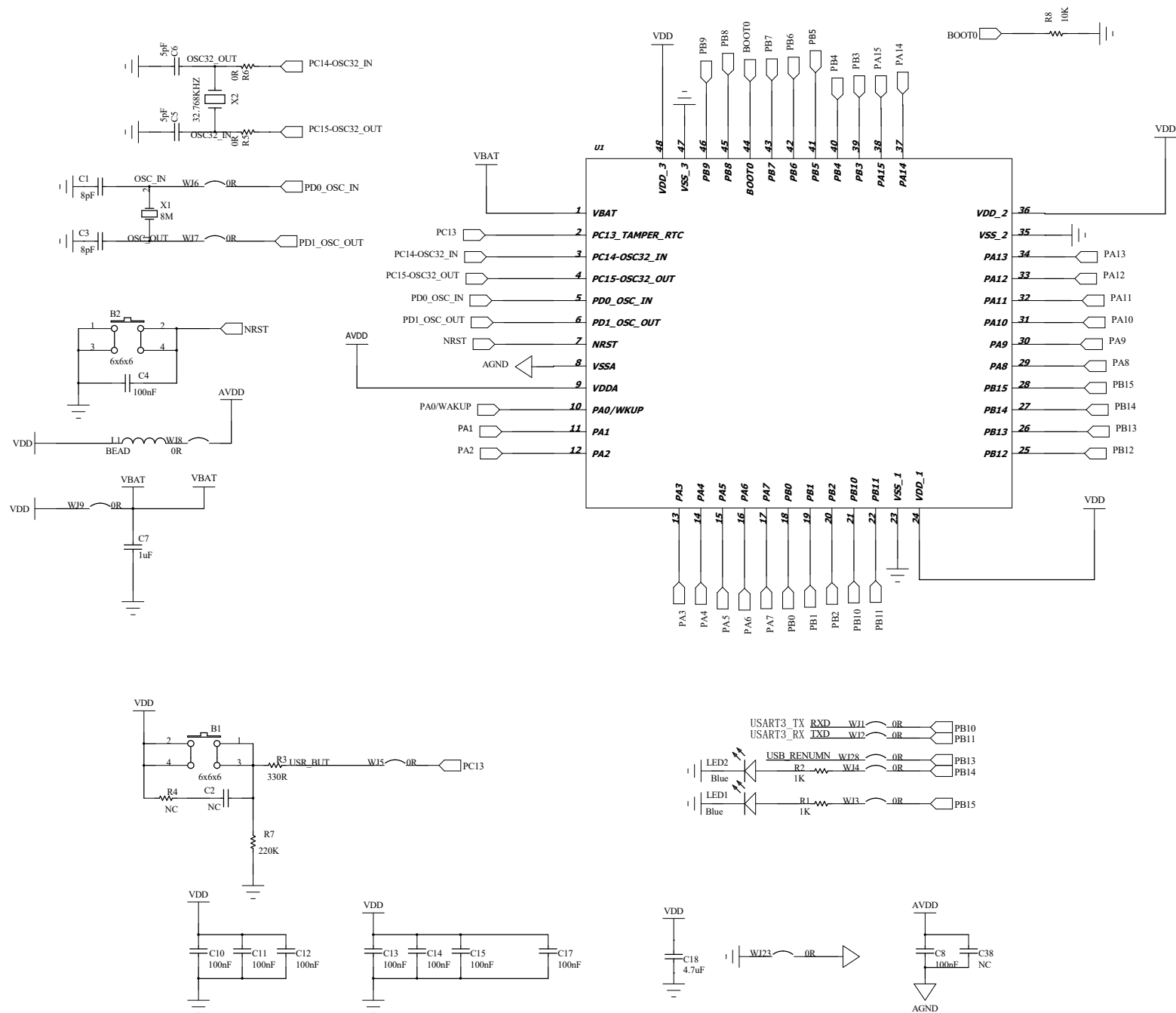
 CHIPSEA		A3
PROJECT: 项目名称	CS32F103_LQFP48_开发板	VER: 版本号 1.1
TITLE: 名称		Page: 页码 1 5
Drawn By: 制图	DATE: 日期	
Checked By: 审核	DATE: 日期	
Approved By: 批准	DATE: 日期	

D

C

B

A



TESTPOINT

PROJECT: 项目名 CS32F103_LQFP48_开发板		VER: 版本号 1.1	
TITLE: 名称 MCU		Page: 页码 2 5	
Drawn By: 制图		DATE: 日期	
Checked By: 审核		DATE: 日期	
Approved By: 批准		DATE: 日期	

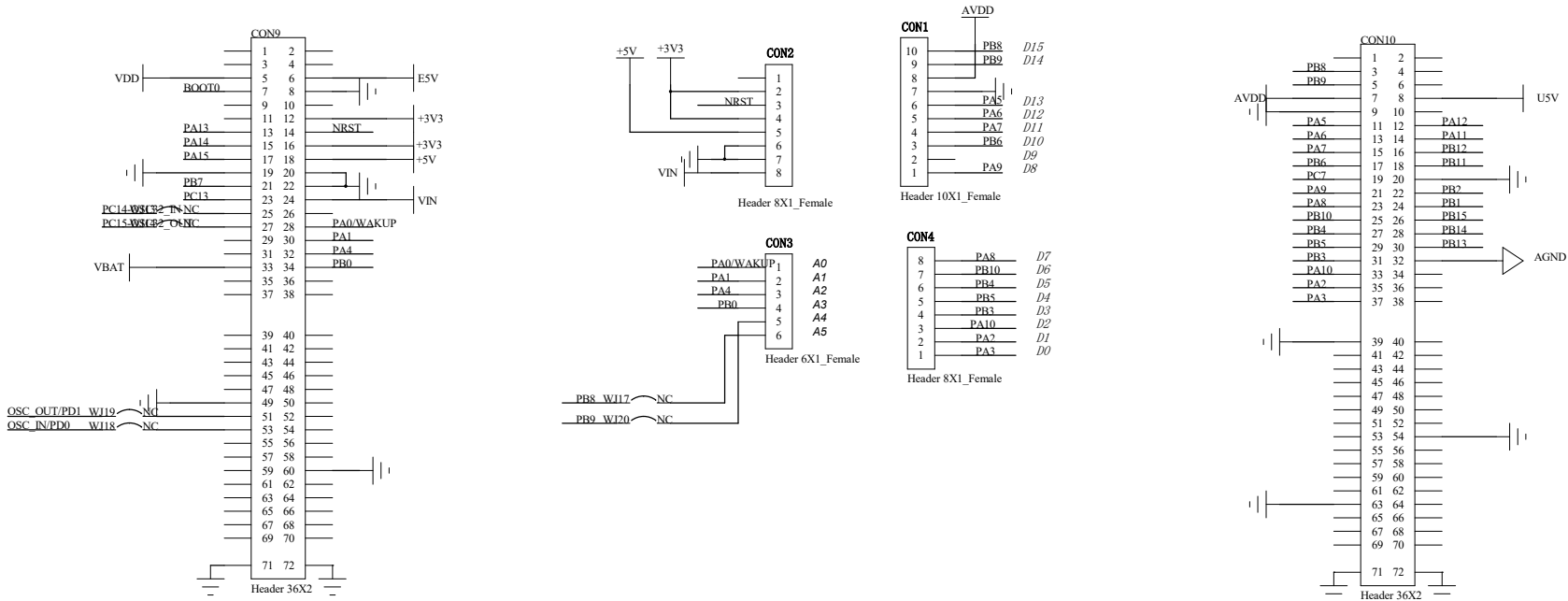
D

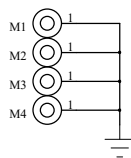
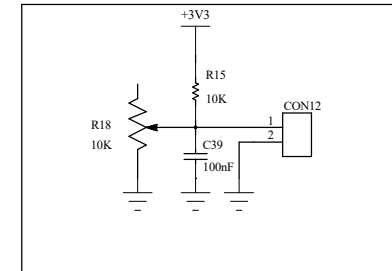
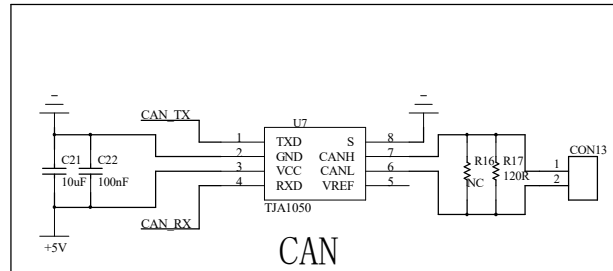
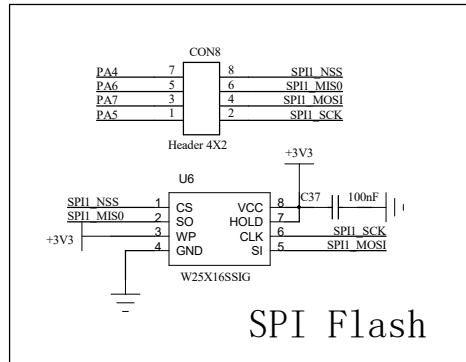
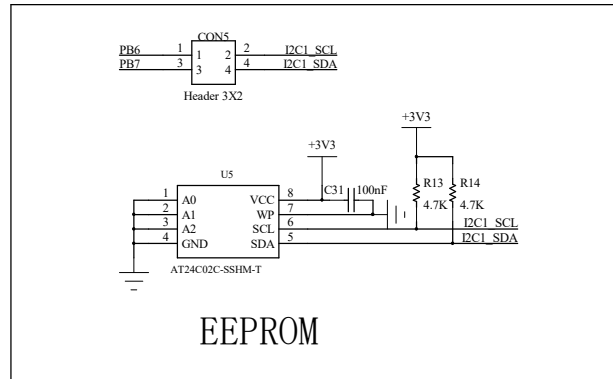
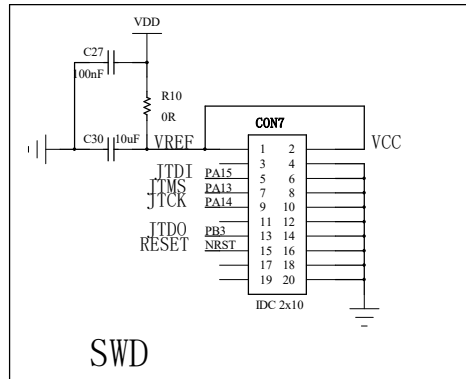
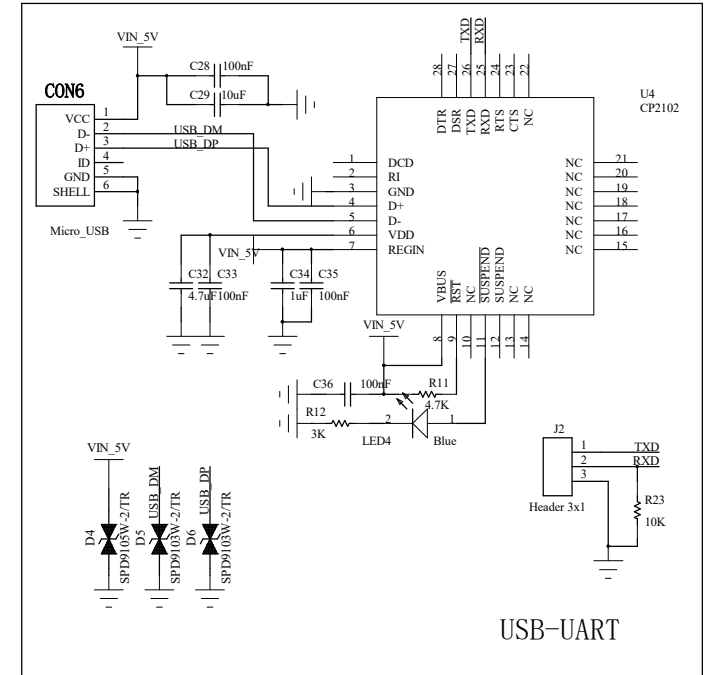
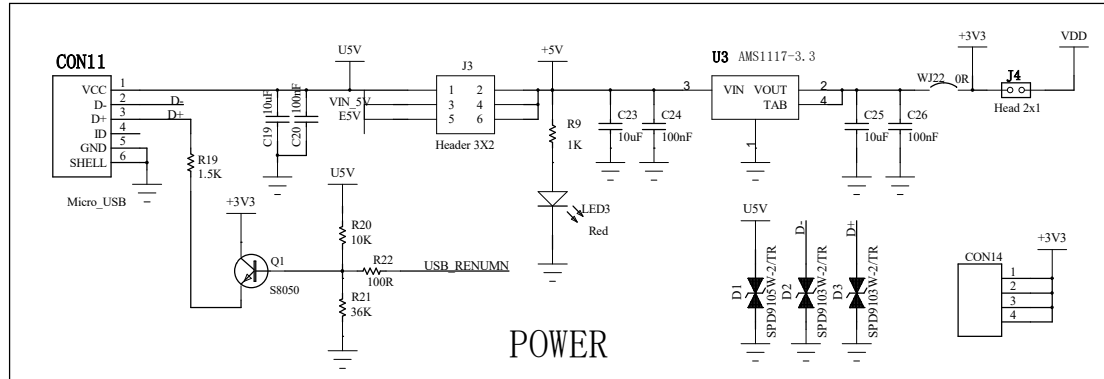
C

B

A

Extension connectors





		A3
PROJECT:	CS32F103_IQFP48_开发板	VER: 1.1
TITLE:	名称	Page: 4 5
Drawn By:	制图	DATE: 日期
Checked By:	审核	DATE: 日期
Approved By:	批准	DATE: 日期

History

Revision	Data	Description
V1.0	2021-12-10	N/A
V1.1	2022-2-24	1. 增加CAN接口电路, 跟USB共用PA11, PA12; 2. 去掉DC座子, 改为micro接口; 3. 增加一路可调电阻; 4. EEPROM I2C增加上拉电阻;5. 串口3改为PB10, PB11; 6. USB增加ESD二极管